

# Special adherence inks



The Linx range of special adherence inks for CIJ printers addresses the needs of applications where production processes may challenge the adherence or durability of other inks.

For a full profile of each ink, including printer compatibility, refer to the 'Summary of the Linx range of dye-based inks' datasheet.

- Black plastic-film 1016
- Black wet process 1055
- Black wet process 1056
- Black bottling 1058
- Black oil-penetrating ink 1062
- Black grease-penetrating ink 1063
- Black dry glass 1065
- Black PE 1130
- Black food-packaging 2250



## ■ Black plastic-film 1016

A fast-drying ink which offers outstanding adhesion to OPP and BOPP materials, as well as other plastics which are traditionally difficult to code onto, such as polypropylene, polyethylene and nylon.



## ■ Black wet process 1055

An ink that resists water and can be applied through a thin layer of moisture. It is water-resistant when dry and therefore suitable for cold-fill bottling as well as frozen foods, and products that will be soaked or rinsed following coding.



## ■ Black wet process 1056

An ink that resists water and can be applied through a thin layer of moisture. It is water-resistant when dry and therefore suitable for cold-fill bottling as well as frozen foods, and products that will be soaked or rinsed following coding. A stronger colour than 1055 it requires a stronger caustic wash to remove.



## ■ Black bottling 1058

Penetrates condensation making it ideal for wet bottle applications. Provides a good print quality with a fast drying time, and also suitable for high humidity environments.

# Special adherence inks

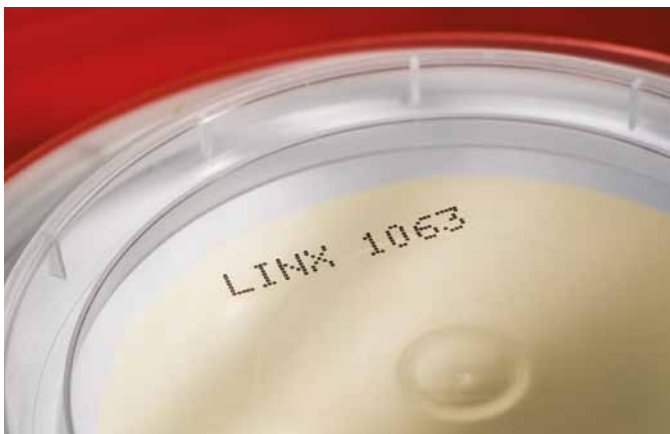
- Black plastic-film 1016
- Black wet process 1055
- Black wet process 1056
- Black bottling 1058
- Black oil-penetrating ink 1062

- Black grease-penetrating ink 1063
- Black dry glass 1065
- Black PE 1130
- Black food-packaging 2250



## ■ Black oil-penetrating ink 1062

Prints effectively through light layers of oil onto plastics, metal, glass and waxy surfaces including OPP. Good for both food and light engineering applications.



## ■ Black grease-penetrating ink 1063\*

Provides excellent adhesion and contrast on substrates with a light oily or greasy film, for example flexible food packaging containers, or where the code will be exposed to oil later in the process. Also suitable where a light layer of condensation is present.



## ■ Black PE 1130\*

Fast-drying ink which adheres extremely well to polyethylene, as well as other plastics which are traditionally hard to code onto, such as nylon and some types of polypropylene.



## ■ Black dry glass 1065

Provides outstanding adhesion, legibility and rub resistance on dry glass and PET. Ideal for fast-moving food processing environments.



## ■ Black food-packaging 2250

Alcohol-based ink with a low odour which adheres well to a range of substrates, including most plastics. Ketone and chromium-free it also meets USDA requirements for incidental contact with meat and poultry.

\* Conforms to Swiss Ordinance 817.023.21 (for food packaging applications).

## Ordering pack options

INK FEATURES	INK / SOLVENT BASE	DRYING TIME	RECOMMENDED LINX SOLVENT	ORDERING PACK OPTIONS			
				5 Litre	1 Litre	EasiPacks	Combipacks
<b>Black plastic-film 1016</b>	MEK	1-2 seconds	1506	Yes	Yes		Yes
<b>Black wet process 1055</b>	MEK	1-5 seconds	1555	Yes	Yes	Yes	Yes
<b>Black wet process 1056</b>	MEK	1-5 seconds	1555	Yes	Yes		Yes
<b>Black bottling 1058</b>	MEK	1-3 seconds	1558	Yes			Yes
<b>Black oil-penetrating 1062</b>	MEK	1-2 seconds	1505	Yes	Yes		
<b>Black grease-penetrating 1063</b>	MEK	1-2 seconds	1563	Yes	Yes	Yes	
<b>Black dry glass 1065</b>	MEK	1-2 seconds	1565	Yes	Yes	Yes	Yes
<b>Black PE 1130</b>	MEK	1-2 seconds	1530	Yes	Yes	Yes	Yes
<b>Black food-packaging 2250</b>	Ethanol	2-4 seconds	2750 or 2502	Yes	Yes		Yes

## Quality assurance

It is always recommended that only Linx continuous ink jet inks and solvents are used in Linx printers, as substitutes can affect printer performance or cause printer failure.

Linx inks and solvents are formulated specifically for use in Linx printers to ensure performance and reliability.

They are manufactured to certified and verifiable ISO 9001 quality procedures.

All raw materials are screened and audited to comply with new legislation to ensure a continuously safe and legal supply.

## Ink handling guidelines

Linx takes great care to ensure that none of their CIJ inks and solvents are classified as 'Toxic to Health' or 'Environmentally Damaging'.

Details of safety precautions for handling these fluids can be found on the relevant Safety Data Sheets.

## Ordering options for Linx inks and solvents

### Standard 5 litre packs

(10 x 0.5 litre bottles/cartridges of either ink or solvent) for customers requiring at least 5 litres of ink per year.

### 1L packs

(2 x 0.5 litre bottles/cartridges of ink) for customers using less than 2 litres of ink per year.

### EasiPacks

(10 x 0.5 litre bottles/cartridges of ink in 1 litre packs) for customers requiring the flexibility to subdivide a 5 litre box.

### Combipacks\*

(4 x 0.5 litre bottles of ink and 6 x 0.5 litre bottles of matching solvent) for customers requiring less than 5 litres of ink per year.

\*Not available for the 8900 Series of printers

## Ink and solvent storage and use

Storage:

Between +15°C and +25°C

Operating temperature:

Between +5°C and +45°C

## Ink overviews

For advice on individual applications, please consult Linx or your local Linx Distributor.

# Special adherence inks

---



For more information, contact Linx Printing Technologies Ltd, Linx House, 8 Stocks Bridge Way, Compass Point Business Park, St Ives, Cambs, PE27 5JL, UK. **Telephone** +44 (0)1480 302100 **Fax** +44 (0)1480 302624 **Email** [sales@linxglobal.com](mailto:sales@linxglobal.com) **Website** [www.linxglobal.com](http://www.linxglobal.com)

Linx is a registered trademark of Linx Printing Technologies Ltd.  
© Linx Printing Technologies Ltd 2017