

# VISIONSLICED

Machine vision inspection system of envelopes, vacuum packs, flow packs, trays with sliced food.



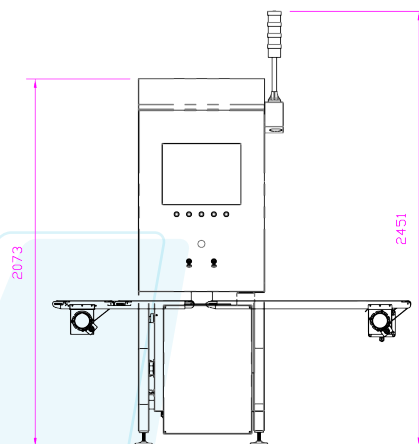
- ✓ Easy installation on existing conveyor.
- ✓ Robust, compact and rugged design.
- ✓ Maintenance free.
- ✓ Long life and fast amortization system.
- ✓ Intuitive user interface.
- ✓ Quick and easy format changes.
- ✓ Parameters and tolerances setting for each format.
- ✓ Remote control via internet and remote diagnosis.
- ✓ Real time production statistics.
- ✓ Rejection signal management. E2M offers a wide range of defective packaging rejection systems.

## BENEFITS

- Maximum processing capacity: 300 packages / min.
- Inspection area: adaptable to the package format.
- Max. number of programs (formats): unlimited.
- Max. number of analysis (windows): unlimited.

## FEATURES

- 1 CMOS B / W 1.3 Mp camera. (standard equipment).
- Adjustable high performance LED lighting system.
- IP67 protection stainless steel enclosure for cameras.
- Latest generation INTEL processor.
- Windows 10 based computer system and interface.
- 17" TFT touchscreen monitor for operator communication.
- Keyboard with mouse.
- USB, Ethernet.
- Container position control by sensor and encoder.



ORIENTING

INSPECTING

REJECTING

ANY KIND OF EMPTY OR FULL BOTTLES AND CONTAINERS

# VISIONSLICED

Machine vision inspection system of envelopes, vacuum packs, flow packs, trays with sliced food.



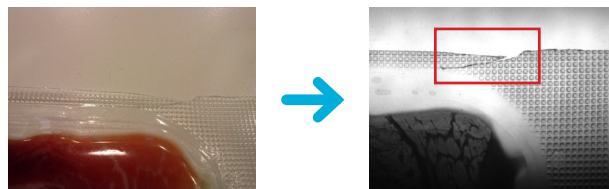
**VELOCITY**  
7.200 CNT/H



**GAP**  
50 [mm]

## INSPECTIONS TO BE CARRIED OUT:

- General inspection of the package.
- General measures.
- Punching, contour cuts, cracks.
- Important deformations in the contour.
- Pieces of material excess, not completely cut.



Contour cut

## CLOSURE FILM:

- Presence.
- Identification according to patterns.
- Integrity.
- X Y position of the film with respect to the package, according to patterns.
- Important stains on the surface.

## PRINTING AND MARKS:

- Barcode verification.
- Significant digits reading.
- Printed text reading, such as "gluten free".
- Verification of ink markings, such as best-before date and batch number.

## WELDING:

- Welding continuity defects.
- Presence of the product in the welding area.
- Identification of folds.
- Bubble identification in the welding area.

## LABELS:

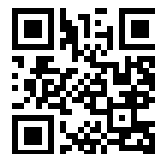
- Presence, position, inclination, identification, markings, break on both sides of the container, front and back.
- Product inspection contained in the envelope.
- Presence, occupied area, distribution or distribution, identification.



**Estudis Electro-Mecànics, S.L.**  
Pau Vila i Dinarés, 4-10  
08192 Sant Quirze del Vallès, Barcelona, Spain  
T. +34 93 720 85 40 F. +34 93 720 85 25  
[www.e2m.es](http://www.e2m.es)



OUR NETWORKS



GET UPDATE!

E2m offers customized solutions to meet specific requirements of each customer.  
Technical specifications updated on the website.